



***North Point Sailing Association
Racing Instructions for 2011***

Revised 3/28/11

NPSA Race Book

Table of Contents

Rules of NPSA Racing	3- 10
Rules, Membership	3
Notice to Competitors, Racing Classes.....	4
Racing Instructions	5-10
Appendix A – Course mark definitions	11
Course Marks Distance Matrix	12
Course Marks Magnetic Bearings	13
Course Marks Location (GPS).....	14
Map of Race Area	15
Appendix B – NPSA Race Courses	16-17
NPSA & RCRA Race Courses	18-20
Appendix C – Starting Sequence	21
Appendix D – Committee Boat Assignments	22
Appendix E – Committee Boat Responsibilities	23-24
Committee Boat Protocol	25
Appendix F – NPSA Special Races	
Double Handed Race (May 28th)	26
16 th Annual Harry Young Race (Sept 11th)	27
Craighill Lighthouse Regatta	28
Appendix H - 2011 Schedule of Events	29

1. Rules

All rules will be governed by the 2009-2012 ISAF Racing Rules, except as modified by these instructions.

- A) All classes:
 - 1) All boats will sail under PHRF ratings as determined by the Race Committee Chairman.
 - 2) There will be a penalty for oversized headsails.
 - 3) Use of double headsails is permitted for white and blue class. Single headsail is permitted for yellow class.
 - 4) Captains are required to notify the Race Committee of any modifications to their boat, sails or equipment that shall affect their PHRF rating.
 - 5) All boats are required to sail under U. S. Coast Guard regulations (which includes the proper and timely use of running, steaming and anchor lights).
 - 6) It is the responsibility of each skipper and crew to understand and comply with the ISAF Racing Rules and the rules in the NPSA 2010 Racing Instructions.

- B) Non- Spinnaker Classes:
 - 1) Spinnakers and cruising spinnakers are not permitted in the Non-Spinnaker Classes.

 - 2) A drifter may be used for either a first or second headsail as long as it has hanks or luff tape along the luff.
 - 3) Only one whisker pole may be deployed at a time. If it is telescoping it must not be extended beyond the "J" value of the boat. The "J" value is the distance from the base of the mast to the forestay tack. Telescoping poles must be clearly marked at the "J" length.

- C) Weather
 - 1) Sustained winds greater than 20 knots 45 minutes before first gun will cause postponement or cancellation of a race.
 - 2) Cancellation or postponement of a race is at the sole discretion of the race committee chairperson or designee. Factors that may cause postponement or cancellation include, but are not limited to safety.

- D) Final Decision:
 - 1) All decisions of the Race Committee Chairman and the NPSA Officers are final.

2. Membership:

- A) Skippers are required to be NPSA members in good standing. Membership forms are available from Charlie Rouse, 2405 Lodge Farm Road Baltimore, MD 21219, Phone #: (410) 388.2535

- B) Fees
 - 1) Skippers – \$30 for any or all races. One boat and One Captain
 - 2) Crew – \$20 for any or all races.
 - 3) Race series fee-\$25.00 per boat for the 4 series.

- C) Each captain and any crew member that plans to assume the helm during a race must complete a racing rules quiz. The quiz will be given at the March and April club meeting after the rules seminar.
 - 1) If a captain cannot attend the rules meeting, it is his/her responsibility to arrange a make-up quiz with the Race Committee Chairman.

3. Notices to Competitors:

- A) Notices to competitors will be posted on the "Official Club Bulletin Boards" located at Young's Boat Yard and Brian's Old Bay Marina and/or on the NPSA Website.

4. Changes in Sailing Instructions:

- A) Any change(s) in the sailing instructions will be posted on the three "Official Club Bulletin Boards" before 5:00 p.m. on the day before they take effect.

5. Racing Classes:

- A) Competitors will be grouped into classes based upon registration and experience.
 - 1) All classes will race in the same racing area.
 - 2) Class flags will be issued by the Race Committee.
- B) All boats must display the applicable class flag on both the bow and stern during a race.
- C) Classes
 - 1) Spinnaker
 - a. Shall display white flag
 - 2) Non-Spinnaker
 - a. Shall display a blue flag
 - 3) Cruising
 - a. Shall display a yellow flag
 - b. Shall only fly one headsail at any given time
 - c. Headsail cannot be poled out. Headsail may be held out by hand. (This rule is to promote racing with short-handed crew.)
 - d. Class will be limited to novice skippers and crew and those skippers who chose to outfit their boats in a cruising-like manner.
 - e. Cruising like manner may be defined as but not limited to:
 - i. Roller furling drum mounted above deck.
 - ii. Fixed Prop.
 - iii. Anchor attached to bow roller during racing.
 - iv. Small crew size when compared to the length of the boat.
 - v. Hanks or luff tape on jibs.
 - vi. Sail material that is chosen for its longevity and not its performance.
 - vii. All interior amenities are intact and are in working order.

10. The Start:

- A) See Appendix C, "Start Sequence"
- B) The starting line is defined as a line drawn between an orange flag on the committee boat and the nearby government mark. The starting buoy will be designated by posting either a green banner with an odd number or a red banner with an even number on the lifeline or pulpit adjacent to the course flag. Most starts will be at or near Penwood channel buoys PW3 (C"3"), PW5 (C"5"), PW7 (C"7"), PW6 (N"6"), PW8 (N"8"), or Iron Ore Pier Channel OP4 (N"4").
- C) All boats are asked to check in with the committee boat before the Start of the Race. This should be accomplished by sailing close by and both parties acknowledging with a wave.
- D) After the warning signal all boats are strongly requested to stay off the radio unless contacted by the Committee Boat, are with-drawing or are identifying yourself at the finish of a race. The race committee requests that all racers monitor the radio for incoming calls from the RC boat with information concerning change of course, change of finish line, weather or other safety issues.
- E) A boat whose preparatory signal has not been made must keep clear of the starting area and of all boats whose preparatory signal has been made. Any boat repeatedly failing to keep clear of the starting area will be warned of a possible disqualification. The only time a boat may be in the starting area is before the first preparatory signal (Blue Shape Up) and during the 5-minute preparatory period for its class.
- F) The starting area is defined as a rectangular area 5 boat lengths out from each pin parallel to the starting line and 10 boat lengths perpendicular to the start line.
- G) A boat must have its engine off five minutes before its start. A boat entering Old Road Bay with intent to race, but is more than ten minutes late for its start (upon entering the starting area), may use its engine to reach the starting area. Such a boat shall have its engine off before entering the starting area defined in paragraph 10F.

11. Recalls:

- A) The Race Committee will attempt to notify premature starts by VHF radio channel 68, voice hailer, etc.
- B) A general recall will be signaled by many short blasts on a horn and raising the red and white striped postponement pennant (AP).
- C) When a general recall has been signaled, a new race will start with a blue preparatory shape signaling five minutes to the first start. All other classes will start with the regular 5-minute sequences.

12. Shortening Course:

- A) The Race Committee may shorten the course at any racing mark or Government mark.
- B) The Committee Boat will position itself at the new mark to establish a finish line. The Committee Boat will also raise the plain blue flag and the “S” flag (blue square on a white background). No other notification, VHF or otherwise, will be given.
- C) A boat shall finish between the orange flag on the RC boat and the nearby mark.

13. Abandonment:

- A) The sound signal to abandon all races shall be many long horn blasts from the Committee Boat, the Commodore's boat and/or the Race Committee Chairman's boat.
- B) The N abandonment flag (blue & white checks) will be flown from the Committee boat over the “A” flag (blue and white striped swallow tail).
- C) The Committee Boat will broadcast race abandonment to the fleet by VHF radio channel 68.

14. Postponement:

- A) Announcements concerning delays or abandonment due to dangerous weather conditions or other factors will be made by VHF channel 68 on the quarter hour beginning at 5:45 pm.
- B) Postponements will be made on 15-minute increments until 6:45. At that time the race committee chairperson or designee has the option to cancel the race. The N abandonment flag (blue & white checks) will be flown from the Committee boat over the “A” flag (blue and white striped swallow tail). The Committee Boat will broadcast race abandonment to the fleet by VHF radio channel 68.
- C) In the event of a postponement or delay before or during the starting sequence an AP pennant (red and white stripes) will be flown.
- D) All races not started are postponed.
- E) Postponed races will restart with a blue preparatory shape signaling five minutes to the start of the next class. The sequence will progress as regularly scheduled.

15. The Finish:

- A) The finish line will be between the orange flag on the Race Committee Boat and the nearby government mark.
- B) Finish Line
After dark, all boats finishing are required to identify themselves to the Committee Boat as they are about to finish. Boats may do so by illuminating their sail numbers, using verbal contact, or making contact via VHF channel 68.
 - 1) If the Committee Boat has left the finish line, a racing boat shall take its own time (elapsed and GPS time if available) when the finish mark appears within one boat length and abeam. If possible, note any boats finishing ahead or behind. Report your time to the Race Committee.
 - 2) Upon finishing a race, a boat shall stay clear of the finish line. It is preferred that business with the Committee Boat be conducted at the dock or if necessary, on the off course side of the Race Committee Boat.

16. Time Limit:

- A) At least one boat from each class must reach the finish line within two hours of the start of the race. Otherwise the race shall be abandoned for the class in question.

17. Withdrawal:

- A) Any competitor that "posts" in the starting area and /or starts the race and subsequently withdraws is required to notify the Committee Boat at the earliest possible moment. This may be done by VHF radio channel 68 as a courtesy to the Committee Boat who may otherwise assemble a search party.

18. Scoring:

- A) Scoring for a Series will use low point system.
- 1) Individual races will be scored by the following: 1 for 1st, 2 for 2nd, 3 for 3rd, etc.
 - 2) To "Qualify" for a series a boat must "post" at the starting line, and / or compete in 4 races in a 5 or 6 race series.
 - 3) For any series of less than 5 completed races a boat must compete in at least 1 less than the number of races completed.
 - 4) A boat receiving a DNC, DSQ, or RAF may not use it as one of the "Qualifying" races.
 - 5) To calculate an overall score for a series add the individual scores for each race less throw-outs. The boat with the lowest score wins the series.
- B) All classes may be allowed one throw out per each race series. Should scheduled races be canceled, abandoned or called due to time limits, resulting in less than 6 races completed per series, the following throw-out schedule will apply. Same schedule will apply to the number of races a boat can throw-out during a series if they finish less than 6 races in a series.

Completed Races	# of Throw-out(s)
6 or 5 races	One throw-out
4 or fewer	None

- C) Scoring Penalties: The following penalties will be used to calculate a boats score.
- 1) DNF will be scored as the last boat to finish plus 1
 - 2) DNC will be scored as the last boat to post in the starting area plus 1. A DNC may be used as a throw-out
 - 3) DSQ will be scored as the last boat to finish plus1. A DSQ may not be used as a throw out.
 - 4) RAF will be scored as the last boat to finish plus1. A RAF may not be used as a throw out.
- D) Qualifying for "Overall" placement.
- 1) A boat must "Qualify" in all 4 of the individual series to qualify for "Overall".
 - 2) A boats placement of finish in each of the 4 individual series will be totaled. The boat with the lowest score will be the winner, and so on for each qualifying boat.
- E) In the event of a tie score at the end of a series or for the "overall" the tie will be broken using the ISAF 2009-2012 procedure.

19. Penalties:

- A) Over Early
 - 1) A boat over early shall sail back behind the start line and re-start. While maneuvering back to the start line, boat must keep clear of all other boats. [This replaces former rule which stated that a boat over early must 'round the mark' and re-start.
- B) Fouling Another Boat
 - 1) A boat that fouls another boat may exonerate herself by performing two 360° turns as a penalty. The 720° penalty, Rule 44.1 and 44.2 of the ISAF, will be in effect for all classes and for all races.
 - 2) Penalty turns must be done at the first reasonable opportunity keeping clear of other boats racing.
 - 3) The boat that is being protested may or may not perform penalty turns.
 - 4) A boat that fouls another boat and causes serious damage or gains significant advantage in the race by her breach must retire.
 - 5) If the protested boat chooses not to perform a penalty turn and is found at fault by the protest committee, they will be scored DSQ for the race.
- C) Touching a Mark
 - 1) A boat touching a starting mark or racing mark must take a 360° turn penalty to be exonerated. Rules 31.1, 44.1 & 44.2 of the ISAF will be in effect for all classes and for all races.
 - 2) A boat touching a finishing mark must take a 360° turn penalty, sail to the course side of the finish line and refinish.
- D) Retired After Finishing (RAF)
 - 1) If a boat after finishing acknowledges that they broke a rule and they are not protested by another boat, the Race Committee can assign an RAF penalty without the necessity of a protest committee.

20. Protests:

- A) Intra-club
 - 1) Captains must notify protested boat at the first reasonable opportunity and fly a red flag.
 - 2) Captains must also notify the Committee Boat of their protest at the time of their finish.
 - 3) Protests shall be heard after the race at Young's Boat Yard.
 - 4) Failure to post in your defense will result in a score of "DSQ".
 - 5) All decisions by the Protest Committee are final.
- B) Inter-club
 - 1) Captains must notify protested boat at the first reasonable opportunity and fly a red flag.
 - 2) Captains must also notify the Committee Boat of their protest at the time of their finish.
 - 3) A written account of the incident as per Part 5 Section A paragraph 61.2 should be sent to the Race Committee within three days.
 - 4) The Race Committee will notify all parties of the time and date of the hearing.
 - 5) Failure to post in your defense will result in a score of "DSQ".
 - 6) All decisions by the Protest Committee are final.

21. Awards:

- A) Awards will be given for each class.
 - 1) Two awards per class when up to 3 boats qualify. 3 awards when 4 or more qualify.
 - 2) Awards will be presented to the winners of each series and to the overall class winners.
 - 3) All awards will be presented at the end of the season at the annual Awards Banquet.

22. VHF Radio Communications:

- A) The Race Committee will monitor VHF channel 68 at all times. Any competitor that drops out of a race must notify the Committee Boat.
- B) The Race Committee recommends that all racers monitor VHF channel 68 for safety and pertinent race information.

23. Committee Boat:

- A) Every boat registered to race will be responsible to act as, or support some or all aspects of race committee for a given week. Appendix D provides boat assignments.
- B) In most cases there will be a designated race committee boat and crew. It is the responsibility of the assigned skipper to contact the race committee chairperson or commodore to see if:
 - 1) The designated skipper needs to provide a race committee boat.
 - 2) To find out if crew is needed to support a committee boat.
 - 3) Both 1) and 2).
- C) If an assigned skipper is not able to meet his or her obligation for an assigned race, it is the responsibility of the skipper to find a skipper who will take his or her place.
- D) If an assigned skipper fails to comply with the above rules, they will be scored DSQ for their assigned race.
- E) Appendix E provides basic Race Committee Boat Responsibilities.
- F) The Committee Boat will not interpret any aspect of this book, any racing rules, or any course information during a race. Contacting the Committee Boat for these types of communications is highly discouraged.

24. Notes For All Classes:

- A) Even when you have the right-of-way, it is your duty to avoid collisions (see Rule 14).
- B) A copy of these racing instructions should be aboard your boat during each race.

Good Luck and Safe Sailing !
North Point Sailing Association Officers

Appendix A NPSA Course Mark Definitions

Mark Designation	Mark Description
PW14	Penwood Wharf Channel NUN "14"
PW12	Penwood Wharf Channel NUN "12"
JAS Pt.	Near South end of Penwood Wharf
ORB2	Old Road Bay light "2" (Sunken Island)
PW8	Penwood Wharf Channel NUN "8"
PW7	Penwood Wharf Channel Can "7"
PW6	Penwood Wharf Channel Nun "6"
PW5	Penwood Wharf Channel Can "5"
PW3	Penwood Wharf Channel Can "3"
BC2B	Brewerton Channel Lighted Buoy "2B" QR
BC4	Brewerton Channel Lighted Buoy "4" FL R 2.5s
BC6	Brewerton Channel Lighted Buoy "6" FL R 4s
BC8	Brewerton Channel Lighted Buoy "8" FL R 4s
BC11	Brewerton Channel Lighted Buoy "11" FL G 6s
BC12	Brewerton Channel Lighted Buoy "12" Fl R 6s
BC14	Brewerton Channel Lighted Buoy "14" QR
OP2	Sparrows Point Ore Pier Channel NUN "2"
OP4	Sparrows Point Ore Pier Channel NUN "4"
Craighill	Lower Craighill Channel Range Front (lighthouse)
BCE10	Brewerton Extension Channel Lighted Buoy "10" FL R 2.5s
RCRA Mark	RCRA Private Mark Southeast of White Rocks
CHU23	Craighill Channel Upper Range Lighted Buoy "23" FL G 4s
CHU25	Craighill Channel Upper Range Lighted Buoy "25" Q G
CHU26	Craighill Channel Upper Range Lighted Buoy "26" FL R 6s
N2	Stony Creek Entrance Nun "2"

2011 NPSA Racing Marks Distance Matrix

Marks	PW12	JASPT	ORB2	PW8	PW7	PW6	PW5	PW3	BC2B	BC4	BC6	BC8	BC12	BC14	OP2	OP4	Craig	BCE10	CHU26
PW12		0.34	0.40	0.49	0.49	0.89	0.86	1.22	2.19	1.72	1.39	1.39	1.81	2.35	1.37	1.17	*	*	2.90
JASPT	0.34		0.32	0.27	0.23	0.66	0.60	0.96	2.09	1.57	1.16	1.06	1.53	1.77	1.05	0.86	*	3.01	2.50
ORB2	0.40	0.32		0.16	0.22	0.51	0.49	0.84	1.81	1.33	1.00	1.24	1.79	2.05	1.25	1.10	2.99	2.71	2.40
PW8	0.49	0.27	0.16		0.07	0.41	0.37	0.73	1.82	1.30	0.91	1.08	1.65	1.91	1.09	0.95	3.09	2.75	2.30
PW7	0.49	0.23	0.22	0.07		0.43	0.38	0.75	1.87	1.34	0.94	1.03	1.58	1.85	1.03	0.88	3.16	2.81	2.40
PW6	0.89	0.66	0.51	0.41	0.43		0.07	0.33	1.51	0.95	0.50	1.03	1.80	1.99	1.08	1.00	2.97	2.48	2.05
PW5	0.86	0.60	0.49	0.37	0.38	0.07		0.37	1.58	1.01	0.56	0.98	1.63	1.93	1.02	0.94	3.04	2.55	2.15
PW3	1.22	.96	.84	.73	.75	.33	.37		1.36	.76	.22	1.04	1.70	2.05	1.11	1.10	3.00	2.36	1.85
BC2B	2.19	2.09	1.81	1.82	1.87	1.51	1.58	1.36		0.60	1.16	2.39	3.09	3.40	2.46	2.46	1.87	1.00	0.56
BC4	1.72	1.57	1.33	1.30	1.34	0.95	1.01	0.76	0.60		0.56	1.79	2.49	2.80	1.86	1.86	2.35	1.68	1.10
BC6	1.39	1.16	1.00	0.91	0.94	0.50	0.56	0.22	1.60	0.56		1.23	1.93	2.24	1.30	1.31	2.85	2.16	1.65
BC8	1.39	1.06	1.24	1.08	1.03	1.03	0.98	1.04	2.39	1.79	1.23		0.70	1.01	0.09	0.28	4.00	3.39	2.90
BC12	1.81	1.53	1.79	1.65	1.58	1.80	1.63	1.70	3.09	2.49	1.93	0.70		0.32	0.63	0.71	4.67	4.09	3.70
BC14	2.35	1.77	2.05	1.91	1.85	1.99	1.93	2.05	3.40	2.80	2.24	1.01	0.32		0.94	0.99	4.96	4.40	4.00
OP2	1.37	1.05	1.25	1.09	1.03	1.08	1.02	1.11	2.46	1.86	1.30	0.09	0.63	0.94		0.22	4.05	3.46	3.00
OP4	1.17	0.86	1.10	0.95	0.88	1.00	0.94	1.10	2.46	1.86	1.31	0.28	0.71	0.99	0.22		3.97	3.45	3.00
Craigl	*	*	2.99	3.09	3.16	2.97	3.04	3.00	1.87	2.35	2.85	4.00	4.67	4.96	4.05	3.97		1.27	1.90
BCE10	*	3.01	2.71	2.75	2.81	2.48	2.55	2.36	1.00	1.68	2.16	3.39	4.09	4.40	3.46	3.45	1.27		0.72
CHU26	2.90	2.50	2.40	2.30	2.40	2.05	2.15	1.85	0.56	1.10	1.65	2.90	3.70	4.0	3.00	3.00	1.90	0.72	

* Un-Navigable course line

NPSA Racing Marks Magnetic Bearing Matrix

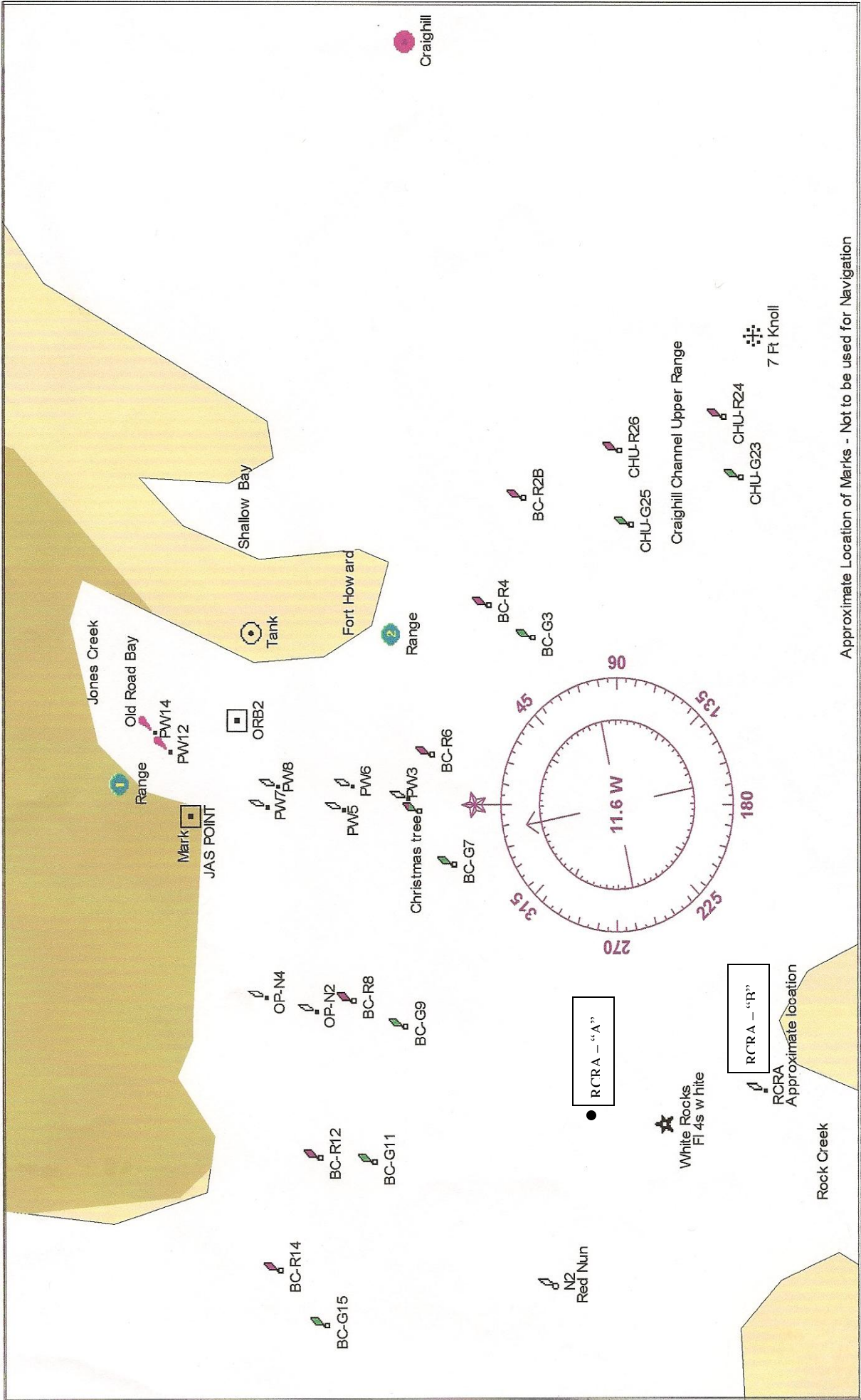
Marks	PW12	JASPT	ORB2	PW8	PW7	PW6	PW5	BC2B	BC4	BC6	BC8	BC12	BC14	OP2	OP4	Craig	PW3	BCE10	CHU 26
PW12		047	357	015	023	010	014	338	349	006	058	079	086	062	066	*	012	*	*
JASPT	227		303	334	346	352	356	329	339	355	062	085	092	067	074	*	000	320	*
ORB2	177	123		064	077	020	028	334	347	009	075	091	097	079	087	297	019	322	154
PW8	195	154	244		110	003	013	328	339	001	076	094	099	081	090	295	101	319	148
PW7	203	166	257	290		355	003	327	337	357	074	093	099	079	089	295	005	318	149
PW6	190	172	200	183	175		128	319	329	358	098	108	111	103	114	288	017	313	143
PW5	194	176	208	193	183	308		319	328	353	096	107	110	101	113	288	007	312	*
BC2B	158	149	154	148	147	148	139		124	123	123	123	123	124	129	262	128	302	*
BC4	169	159	167	159	157	150	148	304		123	123	122	123	124	131	272	131	303	*
BC6	186	175	189	181	177	179	173	303	303		122	122	123	125	135	278	150	303	*
BC8	238	242	255	256	254	278	276	303	303	302		122	124	162	202	285	297	303	*
BC12	259	265	271	274	273	288	287	303	302	302	302		086	297	279	288	299	302	*
BC14	266	272	277	280	279	291	298	303	303	303	304	310		301	288	289	300	303	*
OP2	242	247	259	261	259	283	281	304	304	305	342	117	121		218	296	300	304	*
OP4	246	254	267	270	269	294	293	309	311	315	022	099	108	038		289	311	307	*
Craig	*	*	117	115	115	107	108	082	092	098	105	108	109	106	127		101	052	*
PW3	192	180	199	190	185	197	187	308	311	122	117	119	120	120	131	281		305	136
BCE10	*	140	142	139	138	132	132	112	122	123	123	122	123	123	127	232	125		*
CHU 26			334	330	329	325	324	*	*	*	*	*	*	*	*	*	*	*	*

Additional bearings and distances. NOTE Only racing leg marks to and from are listed.

*** Un-Navigable course line**

NPSA Mark Locations		
Mark	Latitude	Longitude
PW14	N39 12.600'	W076 27.500'
PW12	N39 12.538'	W076 27.494'
JASPT	N39 12.266'	W076 27.750'
ORB2	N39 12.148'	W076 27.370'
PW8	N39 12.050'	W076 27.539'
PW7	N39 12.060'	W076 27.624'
PW6	N39 11.645'	W076 27.478'
PW5	N39 11.684'	W076 27.553'
PW3	N39 11.317'	W076 27.517'
BC2B	N39 10.713'	W076 25.952'
BC4	N39 10.943'	W076 26.664'
BC6	N39 11.154'	W076 27.332'
BC8	N39 11.599'	W076 28.807'
BC9	N39 11.450'	W076 28.925'
BC11	N39 11.700'	W076 29.683'
BC12	N39 11.850'	W076 29.646'
BC14	N39 12.000'	W076 30.003'
OP2	N39 11.680'	W076 28.864'
OP4	N39 11.875'	W076 28.736'
Craighill	N39 11.316'	W076 23.670'
BCE10	N39 10.358'	W076 24.750'
CHU23	N39 09.317'	W076 25.133'
CHU25	N39 10.200'	W076 25.767'
CHU26	N39 10.283'	W076 25.617'
N2	N39 10.850'	W076 30.300'
RCRA	N39 10.067'	W076 29.317'
Race Committee does not take responsibility for errors.		

WORLD - 1 : 140,000
(Unknown format) Chart #WORLD - Depth Units: Feet



Approximate Location of Marks - Not to be used for Navigation

DO NOT USE FOR NAVIGATION
SOME NAVIGATION AIDS MAY NOT BE SHOWN

Abbelec software™ - Copyright © 1995-2003 Abbelec Corporation (800-946-2877)

Appendix B: NPSA Race Courses for 2011

	Wind Direction	Racing Class	NPSA Course Marks	Rounding Trend	Approximate Distance
A	N	1	START - PW12 - BC4 - PW12 - BC4 - FINISH	Starboard	6.95
	N	2	START - PW12 - BC6 - PW12 - BC6 - FINISH	Starboard	5.90
	N	3	START - PW12 - BC4 - FINISH	Starboard	3.12
B	N	1	START - PW12 - BC2B - FINISH	Starboard	4.57
	N	2	START - PW12 - BC4 - FINISH	Starboard	3.53
	N	3	START - PW12 - BC6 - FINISH	Starboard	2.75
C	N	1	START - PW12 - BC4 - PW6(PORT) - BC8 - FINISH	Starboard	5.27
	N	2	START - PW12 - BC4 - PW6(PORT) - BC8 - FINISH	Starboard	5.27
	N	3	START - PW12 - BC6 - PW6(PORT) - BC8 - FINISH	Starboard	4.49
D	N	1	START - PW12 - BC2B - BC8 - PW12 - FINISH	Starboard	7.69
	N	2	START - PW12 - BC4 - BC8 - PW12 - FINISH	Starboard	6.62
	N	3	START - PW12 - BC6 - BC8 - PW12 - FINISH	Starboard	5.73
E	N	1	START - PW12 - CHU26 - FINISH	Starboard	5.69
	N	2	START - PW12 - BC2B - FINISH	Starboard	4.50
	N	3	START - PW12 - BC4 - FINISH	Starboard	3.51
F	N	1	START - PW12 - BC4 - BC6 - FINISH	Starboard	3.70
	N	2	START - PW12 - BC4 - BC6 - FINISH	Starboard	3.70
	N	3	START - PW12 - BC6 - FINISH	Starboard	2.81
H	E	1	(START OP4) - PW7 - BC14 - FINISH	Starboard	3.72
	E	2	(START OP4) - PW7 - BC14 - FINISH	Starboard	3.72
	E	3	(START OP4) - PW7 - BC12 - FINISH	Starboard	3.17
I	E	1	START - CRIAG HILL LIGHT - FINISH	Starboard	6.00
	E	2	START - CRIAG HILL LIGHT - FINISH	Starboard	6.00
	E	3	START - CRIAG HILL LIGHT - FINISH	Starboard	6.00
K	E	1	START - PW12 - BC6 - BC14 - FINISH	Starboard	6.03
	E	2	START - PW12 - BC6 - BC12 - FINISH	Starboard	5.46
	E	3	START - PW12 - BC6 - BC8 - FINISH	Starboard	4.19
M	E - SE	1	START - BC2B - BC14 - FINISH	Starboard	7.13
	E - SE	2	START - BC4 - BC14 - FINISH	Starboard	6.01
	E - SE	3	START - BC6 - BC14 - FINISH	Starboard	5.06

	Wind	Class	Course Marks	Rounding Trend	Approximate Distance
--	------	-------	--------------	----------------	----------------------

N	SE	1	START – BC2B – BC14 – FINISH	Starboard	6.85
	SE	2	START – BC4 – BC14 – FINISH	Starboard	5.70
	SE	3	START – BC6 – BC14 – FINISH	Starboard	4.54
O	SE	1	START – CHU26 – PW12 – FINISH	PORT	5.84
	SE	2	START – BC2B – PW12 – FINISH	PORT	4.59
	SE	3	START - BC4 – PW12 – FINISH	PORT	3.56
R	SE	1	<u>(START PW 12)</u> – BC4 – FINISH	PORT	3.44
	SE	2	<u>(START PW12)</u> – BC4 - FINISH	PORT	3.44
	SE	3	<u>(START PW12)</u> – BC6 - FINISH	PORT	2.78
S	S	1	START – BC4 – PW12 – BC4 –PW12 - FINISH	PORT	6.95
	S	2	START – BC6 – PW12 – BC6 – PW12 - FINISH	PORT	5.57
	S	3	START – BC4 – PW12 – FINISH	PORT	3.51
T	S	1	START – BC6 – PW6(PORT) – BC14 - PW12 - FINISH	Starboard	6.23
	S	2	START – BC6 – PW6(PORT) – BC12 - PW12 - FINISH	Starboard	5.51
	S	3	START – BC6 – PW6(PORT) – BC8 - PW12 - FINISH	Starboard	4.32
V	S	1	START – BC4 – BC6 – PW12 - FINISH	Starboard	3.74
	S	2	START – BC4 – BC6 – PW12 - FINISH	Starboard	3.74
	S	3	START – BC6 – PW12 - FINISH	Starboard	3.18
W	SW	1	START – BC8 – BC2B – PW12 – FINISH	Port	6.15
	SW	2	START – BC8 – BC4- PW12 – FINISH	Port	5.08
	SW	3	START – BC8 – BC6 – PW12 – FINISH	Port	4.19
X	SW	1	<u>(START PW12)</u> - BC8 – BC6 - FINISH	Port	4.01
	SW	2	<u>(START PW12)</u> - BC8 – BC6 - FINISH	Port	4.01
	SW	3	<u>(START PW12)</u> - BC8 - FINISH	Port	2.78
Y	W	1	START - BC14 – BC4 - FINISH	Port	5.74
	W	2	START - BC12 – BC4 - FINISH	Port	5.13
	W	3	START - BC12 – BC6 - FINISH	Port	4.12
Z	W-NW	1	<u>(START PW3)</u> - BC8 – BC2B - FINISH	Port	4.79
	W-NW	2	<u>(START PW3)</u> - BC8 – BC4 – FINISH	Port	3.59
	W-NW	3	<u>(START PW3)</u> – BC8 – BC6 – FINISH	Port	2.49

BC = BREWERTON CHANNEL BOUYS ARE LIGHTED RED

OP= IRON ORE PIER CHANNEL BOUYS ARE NUNS

PW = PENWOOD CHANNEL BOUYS ARE CANS AND NUNS

CHU = Craighill Channel

POSSIBLE START MARKS PW12, PW8, PW7, PW6, PW5, PW3,OP4

POSSIBLE FINISH MARKS PW12, PW8, PW7, PW6, PW5, PW3,OP4

(start) race will start at the mark noted in the parenthesis

Appendix for 2nd Summer Series with RCRA

*Courses for this series will be the same as in Spring and Fall series for 2011

2011 NPSA Racing Marks Distance Matrix For RCRA Series Only

Marks	PW3	PW5	PW6	PW7	PW12	BC2B	BC4	BC6	BC8	BC9	BC11	BC12	BC14	CHU23	CHU25	RCRA "B"	N2	CRAIG HILL	OP4
PW3		0.37	0.33	0.75	1.22	1.36	0.76	0.22	1.04	1.10	1.70	1.70	2.05	2.80	1.82	1.85	2.25	3.00	1.10
PW5	0.37		0.07	0.38	0.86	1.58	1.01	0.56	0.98	1.10	1.50	1.63	1.93	3.00	2.00	2.10	2.30	3.04	0.94
PW6	0.33	0.07		0.43	0.89	1.51	0.95	0.50	1.03	1.15	1.72	1.80	1.98	2.75	2.25	2.10	2.30	2.97	1.00
PW7	0.75	0.38	0.43		0.49	1.87	1.34	0.94	1.03	1.20	1.70	1.58	1.85	3.30	2.26	2.25	2.40	3.16	0.88
PW12	1.22	0.86	0.89	0.49		2.19	1.72	1.39	1.39	1.65	2.05	1.81	2.35	*	2.75	2.81	2.90	*	1.17
BC2B	1.36	1.58	1.51	1.87	2.19		0.60	1.16	2.39	2.45	3.10	3.09	3.40	1.50	0.55	*	3.40	1.87	2.46
BC4	0.76	1.01	0.95	1.34	1.72	0.60		0.56	1.79	1.85	2.50	2.49	2.80	2.00	1.20	*	2.80	2.35	1.86
BC6	0.22	0.56	0.50	0.94	1.39	1.16	0.56		1.23	1.30	1.90	1.93	2.24	2.52	1.57	1.80	2.30	2.85	1.31
BC8	1.04	0.98	1.03	1.03	1.39	2.39	1.79	1.23		0.20	0.80	0.70	1.01	3.70	2.75	1.60	1.40	4.00	0.28
BC9	1.10	1.10	1.15	1.20	1.65	2.45	1.85	1.30	0.20		0.65	0.65	1.10	3.70	2.80	1.50	1.20	4.20	0.40
BC11	1.70	1.50	1.72	1.70	2.05	3.10	2.50	1.90	0.80	0.65		0.15	0.45	4.30	3.45	1.70	1.00	4.75	0.75
BC12	1.70	1.63	1.80	1.58	1.81	3.09	2.49	1.93	0.70	0.65	0.15		0.32	4.40	3.50	2.00	1.10	4.67	0.71
BC14	2.05	1.93	1.98	1.85	2.35	3.40	2.80	2.24	1.01	1.10	0.45	0.32		4.70	3.85	2.10	1.15	4.96	0.99
CHU23	2.80	3.00	2.75	3.30	*	1.50	2.00	2.52	3.70	3.70	4.30	4.40	4.70		1.00	*	*	2.32	3.80
CHU25	1.82	2.00	2.25	2.26	2.75	0.55	1.20	1.57	2.75	2.80	3.45	3.50	3.85	1.00		*	*	2.00	2.90
RCRA "B"	1.85	2.10	2.10	2.25	2.81	*	*	1.80	1.60	1.50	1.70	2.00	2.10	*	*		1.22	*	1.90
N2	2.25	2.30	2.30	2.40	2.90	3.40	2.80	2.30	1.40	1.20	1.00	1.10	1.15	*	*	1.22		5.20	1.55
CRAIG HILL	3.00	3.04	2.97	3.16	*	1.87	2.35	2.85	4.00	4.20	4.75	4.67	4.96	2.32	2.00	*	5.20		3.97
OP4	1.10	0.94	1.00	0.88	1.17	2.46	1.86	1.31	0.28	0.40	0.75	0.71	0.99	3.80	2.90	1.90	1.55	3.97	

* Un-Navigable course line

2011 NPSA Racing Marks Bearing Matrix For RCRA Series Only

Marks	PW3	PW5	PW6	PW7	PW12	BC2B	BC4	BC6	BC8	BC9	BC11	BC12	BC14	CHU23	CHU25	RCRA YC "B"	N2	CRAIG HILL	OP4
PW3		187	197	185	192	308	311	122	117	282	287	119	120	147	145	239	268	281	131
PW5	007		308	183	194	319	328	353	096	268	279	107	110	153	148	231	226	288	113
PW6	017	128		175	190	319	329	358	098	272	282	108	111	153	148	228	262	288	114
PW7	005	003	355		203	327	337	357	074	258	270	093	099	155	153	223	251	295	089
PW12	012	014	010	023		338	349	006	058	*	*	079	086	na	na	na	na	*	066
BC2B	128	139	148	147	158		124	123	123	300	300	123	123	na	na	*	285	262	129
BC4	131	148	150	157	169	304		123	123	300	300	122	123	156	150	*	278	272	131
BC6	150	173	179	177	186	303	303		122	298	299	122	123	148	139	242	276	278	135
BC8	297	276	278	254	238	303	303	302		232	290	122	124	na	na	202	250	285	202
BC9	102	88	92	78	*	120	120	118	52		300	300	300	na	na	192	252	na	na
BC11	107	99	102	90	*	120	120	119	110	120		183	135	na	na	*	221	na	77
BC12	299	287	288	273	259	303	302	302	302	120	003		300	na	na	*	208	288	279
BC14	300	298	291	279	266	303	303	303	304	120	315	310		na	na	*	198	289	288
CHU23	327	333	233	335	na	na	336	328	na	na	na	na	na		343	*	*	40	na
CHU25	325	328	328	233	*	*	330	319	na	na	na	na	na	163		*	*	65	na
RCRA YC "B"	59	51	48	43	na	*	*	062	022	012	*	*	*	*	*		326	*	016
N2	088	046	082	071	na	104	099	096	070	072	041	028	018	*	*	146		na	na
CRAIG HILL	101	108	107	115	*	082	092	098	105	na	na	108	109	220	245	*	na		127
OP4	311	293	292	269	246	309	311	315	022	na	257	099	108	na	na	196	na	289	

* Un-navigable course line

na Does not apply to any course

Appendix C: Wednesday Night Starting Sequence

Series	Series		
1, 3, 4	2		
	18:40		Committee Boat Crew is "on the Clock"
18:29	18:44		POSTPONEMENT PENNANT drop and horn test
18:30	18:45	YELLOW	shape and horn Warning
18:35	18:50	BLUE	shape and horn PREPARATORY White Prep Flag for Class # 1.
18:40	18:55	RED	shape and horn START Class # 1. GREEN Prep Flag for Class # 2
18:45	19:00	RED	shape and horn START Class # 2 BLUE Prep Flag for Class # 3
18:50	19:05	RED	Shape and horn START Class # 3

Appendix D: Race Committee Boat Assignments

Race	Date	Boat	Skipper	Phone Number
Spring Series				
Race 1-1	04/20			
Race 1-2	04/27			
Race 1-3	05/04			
Race 1-4	05/11			
Race 1-5	05/18			
Race 1-6	05/25			
Early Summer				
Race 2-1 *	06/01			
Race 2-2	06/8			
Race 2-3	06/15			
Race 2-4	06/22			
Race 2-5	06/29			
Race 2-6 *	07/06			
Late Summer				
Race 3-1	07/13			
Race 3-2	07/20			
Race 3-3	07/27			
Race 3-4 *	08/03			
Race 3-5	08/10			
Race 3-6	08/17			
Fall Series				
Race 4-1	08/24			
Race 4-2 *	08/31			
Race 4-3	09/07			
Race 4-4	09/14			
Race 4-5	09/21			
Race 4-6	09/28			
* Indicated Club Cookout After Race				
Duties for committee boat: *Put chairs upstairs. *Assist with lines. *Raise and lower anchor. *Assist race committee with visual signals during pre-race countdown. *Monitor the radio. *Help clean up and close the boat. *Other duties as assigned. * Any questions ask Dudley. More details SI pg. 25				

Appendix E – Basic Race Committee Responsibilities

- Recommend that you use a timer that is calibrated to GPS time or use hand held GPS.
 - Use fresh batteries for any timing device.
- This starting method takes a minimum of three people to be successful.
 1. One person reading each step of the starting sequence at the appropriate times.
 2. One person raising and lowering the shapes.
 3. One person sounding the horn and watching for premature starters.

Real Time	Time to Last Start	Comment or Action To Be Taken
6:15:00	35:00	Raise Postponement Flag
6:25:00	25:00	Post Course and Starting Buoy
		RAISE Blue Flag (Identifies that Committee Boat is on Station)
6:28:00	22:00	One Minute Until Postponement Shape Drop and Horn Test
6:28:30	21:30	Thirty Seconds Until Shape Drop and Horn Test
6:28:45	21:15	Fifteen Seconds Until Shape Drop and Horn Test
6:28:55	21:05	Five, Four, Three, Two, One
6:29:00	21:00	DROP Postponement Shape and SOUND Horn. One minute Until Raise YELLOW Shape and Sound Horn
6:29:30	20:30	Thirty Seconds Until Shape Raise and Sound Horn
6:29:45	20:15	Fifteen Seconds Until Shape Raise and Sound Horn
6:29:55	20:05	Five, Four, Three, Two, One
6:30:00	20:00	RAISE YELLOW Shape and SOUND Horn
6:33:00	17:00	One Minute Until Lower YELLOW Shape (No Horn)
6:33:30	16:30	Thirty Seconds Until Shape Drop
6:33:45	16:15	Fifteen Seconds Until Shape Drop
6:23:55	16:05	Five, Four, Three, Two, One
6:34:00	16:00	DROP YELLOW Shape
		One minute Until Raise BLUE Shape and Sound Horn
6:34:30	15:30	Thirty Seconds Until Shape Raise and Sound Horn
6:34:45	15:15	Fifteen Seconds Until Shape Raise and Sound Horn
6:34:55	15:05	Five, Four, Three, Two, One
6:35:00	15:00	RAISE BLUE Shape and SOUND Horn
		RAISE White Class Flag (Prep Class 1)
6:38:00	12:00	One Minute Until Lower BLUE Shape (No Horn)
6:38:30	11:30	Thirty Seconds Until Shape Drop
6:38:45	11:15	Fifteen Seconds Until Shape Drop
6:38:55	11:05	Five, Four, Three, Two, One
6:39:00	11:00	DROP BLUE Shape.

		One minute Until Raise Red Shape and Sound Horn
6:39:30	10:30	Thirty Seconds Until Shape Raise and Sound Horn
6:39:45	10:15	Fifteen Seconds Until Shape Raise and Sound Horn
6:39:55	10:05	Five, Four, Three, Two, One
6:40:00	10:00	RAISE Red Shape and SOUND Horn – White Class Start
		DROP White Class Flag – Complete after the start and after identify premature starters on VHS-68.
		RAISE Blue Class Flag (Prep Class 2)
6:43:00	7:00	One Minute Until Lower Red Shape (No Horn)
6:43:30	6:30	Thirty Seconds Until Shape Drop
6:43:45	6:15	Fifteen Seconds Until Shape Drop
6:43:55	6:05	Five, Four, Three, Two, One
6:44:00	6:00	DROP Red Shape.
		One minute Until Raise Red Shape and Sound Horn
6:44:30	5:30	Thirty Seconds Until Shape Raise and Sound Horn
6:44:45	5:15	Fifteen Seconds Until Shape Raise and Sound Horn
6:44:55	5:05	Five, Four, Three, Two, One
6:45:00	5:00	RAISE Red Shape and SOUND Horn – Blue Class Start
		DROP Blue Class Flag – Complete after the start and after identify premature starters on VHS-68.
		RAISE Yellow Class Flag (Prep Class 3)
6:48:00	2:00	One Minute Until Lower Red Shape (No Horn)
6:48:30	1:30	Thirty Seconds Until Shape Drop
6:48:45	1:15	Fifteen Seconds Until Shape Drop
6:48:55	1:05	Five, Four, Three, Two, One
6:49:00	1:00	DROP Red Shape.
		One minute Until Raise Red Shape and Sound Horn
6:49:30	:30	Thirty Seconds Until Shape Raise and Sound Horn
6:49:45	:15	Fifteen Seconds Until Shape Raise and Sound Horn
6:49:55	:05	Five, Four, Three, Two, One
6:50:00	:00	RAISE Red Shape and SOUND Horn – Yellow Class Start
		DROP Yellow Class Flag – Complete after the start and after identify premature starters on VHS-68.
		If Course is Shortened, Move to Finish Mark and Fly Shortened Course Flag & Blue Flag (Committee Boat on Station)

Committee Boat Protocol for Assigned Captains

Each Racing Captain must be responsible to assist the Committee Boat for at least one race during the season. The captain may designate a qualified crew member to fulfill the committee boat duty.

Committee Boat duties:

Preparation

1. Board Myth at 5:45 pm (approximately 1hr 20 min) before the first race horn.
2. Assist the regular crew in departing the dock, and setting the anchor on location.
3. Assist in moving committee boat racing gear to upper deck
4. Spot boats for sail numbers for participating boats and assist regular crew in recording numbers (Dottie).

Starting Sequence:

1. Assist with starting sequence, raising, lowering, and changing class flags
2. Coordinate all duties with regular committee boat crew
3. After final start, relax, enjoy and sights. Eat dinner (bring your own dinner & beverages).

Finishing sequence:

1. Get instructions from regular crew members (Ken). Please maintain a quiet atmosphere to facilitate communication
2. Listen carefully for sail numbers, time and count.
3. Assist regular crew members (Dottie) in recording finishing times.

Returning to Dock:

1. Assist in raising and securing anchor (Dudley).
2. Assist in docking Myth by catching mooring lines, and fending Myth off dock and dock poles.

Do's and Don't

Please store all cell phones, cameras, etc. while performing Committee Boat duties. Do not call out to any boat participating in the race. Please limit chatting to friends and fellow captains participating in the race so committee boat crew can stay focused. Feel free to bring your own food and beverages. The upper deck is the race committee work area. Please keep the area neat and quiet. The main deck area is for socializing.

All assigned captains are required to fulfill their committee boat duty. IF assigned captains cannot make their assigned duty, the captain must find an adequate replacement. Please inform Race Committee Chairperson of the change. Racing Captains will be penalized racing points for a NO SHOW in committee boat duty.

NPSA is our club and it takes all club members to make the club work.

Thank you for your cooperation.

First Annual Double Handed Race

North Point Sailing Association

Saturday, May 28, 2011

Entry Due: Friday, May 27, 2009

Contact: Ryan Reitz ryan.reitz@gmail.com (443) 791-1427 to register

Classes: There will be one non-spin class. Scoring will be done using the Performance Handicap Racing Fleet (PHRF) system. If you need a handicap, please contact Ken Rotan on the Race Committee Boat.

Rendezvous: 10:30am in the vicinity of Penwood channel buoy "PW5".

Start: Between the Committee boat and the designated government mark.

Finish: Between the Committee boat and the closest government mark.

Course: Designated by the Race Committee using the list of courses found in the 2011 NPSA Racing Instructions.

Signals: A single start for all competitors using the 2011 NPSA Racing Instructions. The starting sequence will begin at approximately 10:50 am; **Race will begin at 11:00am**

Time Limit: 3 hours

Protests: Immediately following the race at Young's Boatyard.

Sixteenth Annual Harry Young Cup

North Point Sailing Association

Saturday, September 12, 2011

Entry Due: Wednesday, September 7, 2011

Contact: Ryan Reitz ryan.reitz@gmail.com (443) 791-1427 to register

Classes: There will be one non-spin/double headsail class. Scoring will be done using the Performance Handicap Racing Fleet (PHRF) system. If you need a handicap, contact Ken Rotan on the Race Committee boat.

Rendezvous: 10:30am in the vicinity of Penwood channel buoy "PW5".

Start: Between the Committee boat and the designated government mark.

Finish: Between the Committee boat and the closest government mark.

Course: Designated by the Race Committee using the list of courses found in the 2010 NPSA Racing Instructions.

Signals: A single start for all competitors using the 2011 NPSA Racing Instructions. The starting sequence will begin at approximately 10:50 am. **Race will begin at 11:00am.**

Time Limit: 3 hours

Awards: 1st thru 5th plus the coveted perpetual Harry Young Cup

Social: Awards party following the race. Location to be announced.

Third Annual Craighill Lighthouse Regatta

North Point Sailing Association

TBD

Entry Due: TBD

Background: NPSA has an old neighbor with new life. Craighill Channel Lower Range Front Lighthouse, located in mid-Bay adjacent to North Point was recently acquired by the non-profit organization Historical Place Preservation inc. <http://www.craighillrange.org/>. Their goal is to restore the lighthouse and to provide public access through tours of this historic structure.

Restoration work is to include a wooden plank on piling dock to allow visitor entrance. The dock is planned to be similar to the dock constructed at Thomas Point Lighthouse in 2006. Dock is to be designed by KCI Technologies, Inc. and constructed by Arundel Marine Construction.

Goal:

- 1) To generate general interest in the Craighill Channel Lower Range Front Lighthouse restoration work and
- 2) Perhaps generate some money for the restoration work being undertaken by Historical Place Preservation Inc.(HPP). All proceeds from the race will be donated to HPP.

Contact: Ryan Reitz ryan.reitz@gmail.com (443) 791-1427 to register

Classes: There will be one non-spin/double headsail class. Scoring will be done using the Performance Handicap Racing Fleet (PHRF) system. If you need a handicap, contact Ken Rotan on the Race Committee boat.

Rendezvous: 10:30am in the vicinity of Penwood channel buoy "PW5".

Start: Between the Committee boat and the designated government mark.

Finish: Between the Committee boat and the closest government mark.

Course: NPSA Course I. START – Craighill Lighthouse – FINISH; Starboard Rounding;
Distance 6.00

Signals: A single start for all competitors using the 2011 NPSA Racing Instructions. The starting sequence will begin at approximately 10:50 am. **Race will begin at 11:00am.**

Time Limit: 3 hours

Awards: 1st thru 3th

Social: Awards Lunch “on the water” in Old Road Bay.

2011 Races / Events on the Bay

04/16	Opening Day at Young's Boat Yard - Lunch 11-3:00pm	
04/20	Race 1-1	
04/27	Race 1-2	
05/04	Race 1-3	
05/11	Race 1-4	
05/18	Race 1-5	
05/25	Race 1-6	
06/01		
05/31		
06/01	Race 2-1	
06/08	Race 2-2	
06/15	Race 2-3	
06/22	Race 2-4	
06/29	Race 2-5	
07/06	Race 2-6	Club Cookout
	BCYA/MRSA Annual Race to Baltimore (formerly Sail for Sight)	
07/10	RCRA Balt Lighthouse Classic	
07/13	Race 3-1	
	SMSA Screwpile	
07/20	Race 3-2	
07/27	Race 3-3	Club Cookout
	StMCSA Governors Cup	
08/03	Race 3-4	
	TAYC/CBYC to Oxford	
08/10	Race 3-5	
08/16	Race 3-6	
08/20	Double Handed Race	
08/24	Race 4-1	
08/31	Race 4-2	Club Cookout
09/10	NPSA Harry Young Cup & Crab Feast	
09/07	Race 4-3	
09/14	Race 4-4	
09/21	Race 4-5	
09/21		NPSA CraigHill Lighthouse Regatta; PSA to Queenstown
	SSC/STC Hospice Cup	
09/28	Race 4-6	Put Your Socks On Celebration
	SSC Good Old BoatRegatta	
	BCYA Balt Leukemia	
	RCRA Baltimore Harbor Fall Back	
11/05	NPSA Awards Dinner	